

Loading Technology



Bottom loading arms
Top loading arms
Ship loading arms
Hose supports
**LOADING
TECHNOLOGY**
Fall protection devices
Safety folding stairs
Emergency release couplings
Loading platforms
Swivel joints

MADE IN GERMANY

Design
Project planning
Feasibility study
Work area plan
Documentation
SERVICE
Repair work
Maintenance
Optimisation
24 hr emergency
service



VOORTMANN GmbH & Co. KG Steuerungstechnik

Company headquarters Issum

Lindenau 28 - 30

47661 Issum, Germany

Tel: +49 2835 9233-0

Fax: +49 2835 9233-333

Geldern training centre

Mühlenweg 12

47608 Geldern

Tel: +49 2831 977741-0

Fax: +49 2831 977741-33

email: info@voortmann.de

web: www.voortmann.de

VOORTMANN

Your Specialist in the Loading Technology Field

VOORTMANN has been an experienced full service provider for many years for all things surrounding the loading of liquid and gas media, and offers **everything from a single source**, starting with consultation and design, technical solutions, our own production and service, through to maintenance.

Our many years of working in the largest chemical and petrochemical companies, as well as in the food and gas industry, have established us firmly in the market.

Our product range includes **loading arms** for loading and unloading liquid and gas materials in and out of tankers, rail tank wagons, ships and various transport facilities. Auxiliary equipment for a safe loading process, such as **safety folding stairs**, **safety cages**, **fall protection devices** plus complete **loading platforms** and components like **swivel joints** and **emergency release couplings**, round off the range.

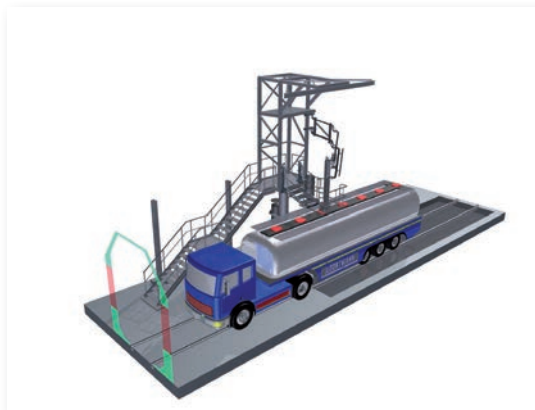
In the area of service, we have a professional repair and maintenance department **including a 24-hour emergency service** for your loading equipment. Extend the service life of your loading facilities and increase their reliability by means of regular maintenance checks - we offer you various maintenance system options here. This applies not only to our own equipment but also to equipment made by all **other manufacturers**, meaning that you only need one point of contact for all your equipment.



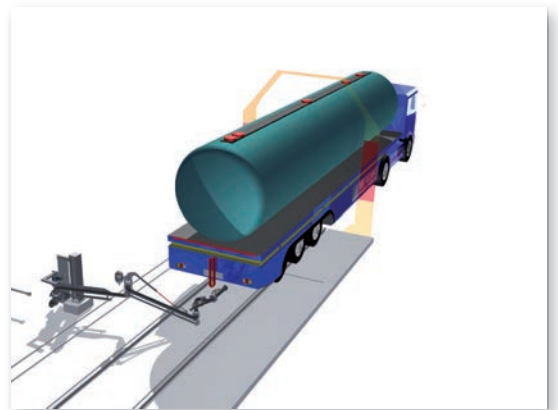
Design and Project Management

With a wide range of experience, we persuade our customers right from the planning phase of the project. We give you expert advice and, in talks with our customers, work out professional and commercially optimised solutions on an individual basis, of course taking all the necessary safety aspects into consideration. We present you with feasibility studies in 3D-view and develop work area plans according to technical measurements. This includes preparing an overall drawing of the entire loading station in 3D including all the relevant components (existing steelwork, loading arms etc.) An approach to the solution is developed, which enables a loading process according to the given parameters. The concept is presented on your premises. The changes discussed are then incorporated into the required concept.

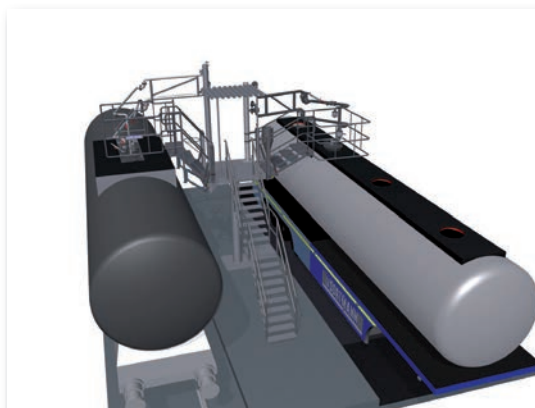
Planning



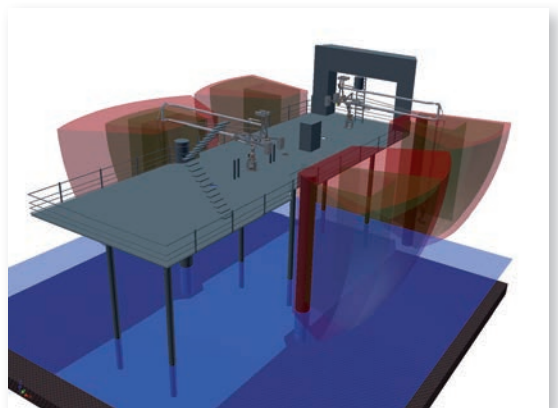
Top loading station for truck / rail tank wagon



Bottom loading station for truck / rail tank wagon



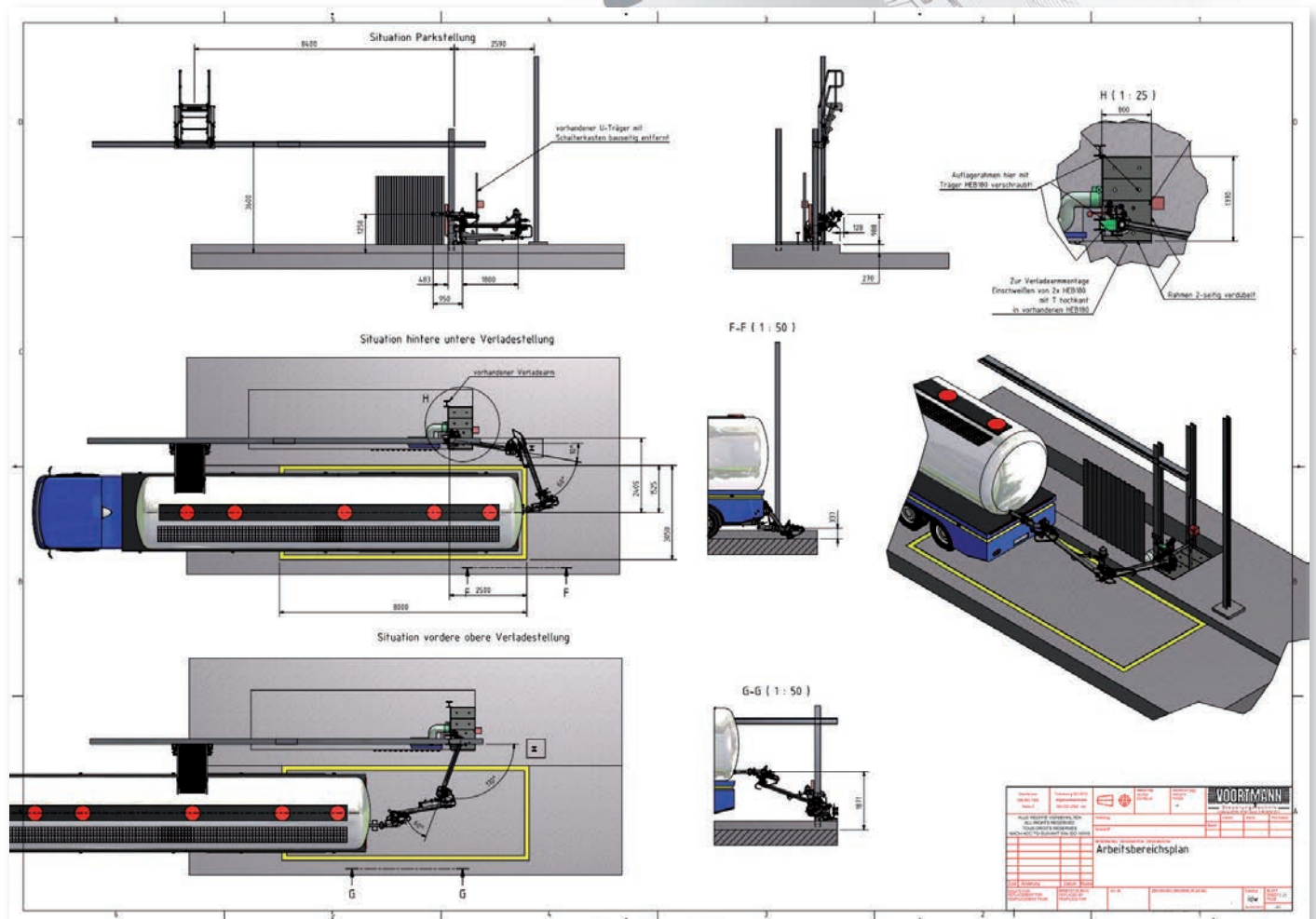
Top loading station for rail truck inc. fall protection device



Ship loading station

Design and Project Management

The 3D model is used to provide you with a 2D version in the form of a scale drawing of the work area plan with all the relevant dimensions and information for your further planning.



Documentation

Information reduces risks

An essential part of our service is the thorough technical documentation. We prepare operating instructions that enable you, as the user, to handle our loading equipment safely and efficiently. For us the documentation is not only part of the product on paper, it is treated with the same care and attention as the product itself. Whether for new facilities or for carrying out conversion work, the supply of individual products or complete loading stations - the documentation gives you safety, traceability and quick availability of the relevant information and documents. Naturally you receive all the necessary paperwork and documentation in line with the legal requirements.



Safety for Operators and the Environment

Documentation

Our certifications

- WHG certification (Water Management Act)
- Pressure Equipment Directive certification
- DIN EN ISO 9001:2008 certification
- Chemicals & Climate Protection Act certification (coolants)
- TDT approval in the loading technology field



Loading Arms

Loading Arms

VOORTMANN offers the ideal loading arm for every situation. Your needs, the safety of your employees and the adaptation to specific applications and guidelines are very important to us.

VOORTMANN loading arms guarantee safe and efficient loading or unloading of rail tank wagons, road tankers and containers. We produce both standard and customised solutions that are tailored to your corresponding applications. Depending on requirements, the loading arms can be produced in different materials, lengths, types of joint, sealing materials and counterbalancing systems and can therefore be used for loading almost all liquid and gas products.

The loading arms can be attached to operating platforms or upright columns and act as a link between the vehicles and the production facility.

Hose loading examples



Hose loading installations / Hose supports

Hose loading installations are characterised by simple handling and are designed to be operated by just one person. A hose support can hold both the product hose and the vapour return hose and these can be swivelled to the connection point simultaneously by the operator. We supply you with either just the hose support or the complete loading installation including the product hose.

Nominal widths:

DN25 (1") – DN 150 (6")

Material:

plastic-, textile- or stainless steel corrugated hose

Operation:

mechanical, hydraulic, fully hydraulic

Options:

heated

insulated

safety disconnect couplings

dry coupling

various connect couplings

and others



Loading Arms

Top loading arms

Top loading arms are used to safely and efficiently load and unload tankers, rail tank wagons and various transport facilities on the top side.

The top loading arm is attached on a loading platform and connects the vehicle with the aid of a fixed flange connection or via the manhole with the on-site container.



Top double loading arm, fully hydraulic, stainless steel



Loading arm with interior lining, DN 80/50, pneumatic lifting/lowering, counterbalancing using gas springs

Loading arm with guided nitrogen hose



Loading Arms

Nominal widths:

DN50 (2") up to and including DN150 (6")

Material:

steel, stainless steel, aluminium, ETFE-lined

Operation:

manual operation, pneumatic, semi-hydraulic, fully hydraulic

Options:

vapour return device

piggable design

pipe trace heating

jacket heating

electrical trace heating

dome-shaped cone

telescopic downpipe

overflow protection devices

safety disconnect couplings

various connect couplings

signalling devices

and others



Triple loading arm



Example of dome-shaped cone

Loading arm, insulated and electrically heated



Bottom loading arms

Bottom loading arms are used to safely and efficiently load tankers, rail tank wagons and various transport facilities underneath at the side .

The bottom loading arm is attached at floor level and connects the vehicle with the aid of a fixed flange connection or a quick-release coupling with the on-site container.

Nominal widths:

DN50 (2") up to and including DN150 (6")

Material:

steel, stainless steel, aluminium, ETFE-lined

Operation:

manual operation

Options:

pipe trace heating

jacket heating

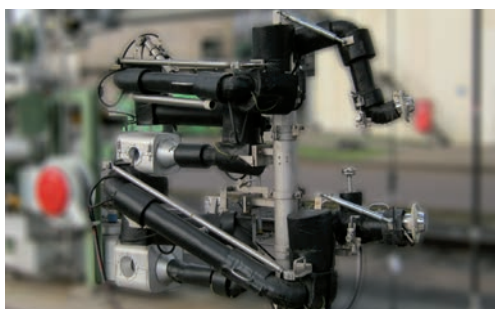
electrical trace heating

safety disconnect couplings

various connect couplings

signalling devices

and others



Bottom loading station vapour return arm on top, product arm underneath insulated and electrically heated



Hose support for bottom loading



Ship loading arms

Ship loading arms are used to load and empty ships used for maritime and inland water transport. The ship loading arm is fitted on a boom and connects the ship with the emptying or loading device.

In certain cases, either for cost reasons or with regard to the availability of loading arms, a general overhaul can represent a more cost-effective alternative to buying a new ship loading arm.

Furthermore, we offer to specially retrofit a hydraulic or emergency uncoupling system, which guarantees a safe and environmentally-friendly way of disconnecting the arm from the ship in an emergency or if the ship moves excessively.

Nominal widths:

DN 100 (4") up to and including DN 200 (8")

Material:

steel, stainless steel

Options:

hydraulic operation

flange mounting monitoring

emergency release couplings

opening angle monitoring

vapour return pipe

insulating flange



Delivery and assembly of a hose handling system for residue removal



Safety folding stairs

The VOORTMANN safety folding stairs make it possible for your operating personnel to safely cross from the loading platforms to the transport containers. By using the VOORTMANN folding stairs, you help to a large extent to make the loading point a safe workplace for your employees. The folding stairs can be used to reach the top side of tankers and tank wagons conveniently and safely.

Folding stairs with a bigger step width not only make the access to the work area bigger but are also suitable for positioning and operating loading arms or other appliances. The VOORTMANN folding stairs are available in various designs and materials and are distinguished by their robust design and the built-in safety devices, e.g. anti-skid and trapping protection.

For added safety, the folding stairs can be fitted with safety cages of various types.



Folding stairs, hydraulic, with manual lever valve



Folding stairs, hydraulic, with special acid-resistant paint and GRP steps



Safety Folding Stairs / Safety Cages

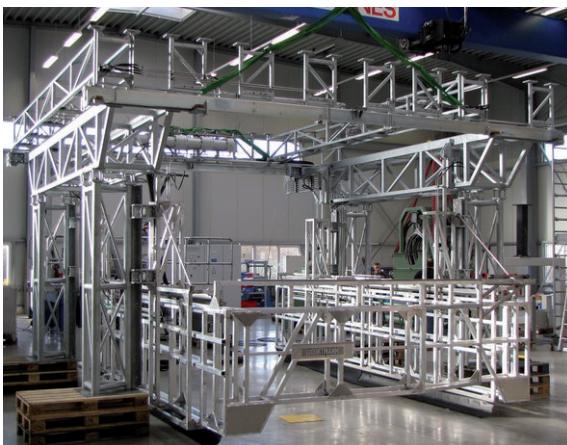
Safety cages / fall protection devices

When working on tankers and rail tank wagons, the operating personnel is exposed to an increased risk of falling. On the part of the transport services, the vehicles are only equipped with rather inadequate safety devices. That is why it is absolutely necessary for any operator of a loading station to safeguard its personnel in the best way possible. In order to be able to work without danger on a tanker or rail tank wagon, VOORTMANN provides complete and low-maintenance safety cages and safety railings.

Our safety cages provide personnel with protection directly on the folding stairs - they are fitted on the folding stairs or on their frame and can be moved together with the stairs or separately.

Fall protection devices are produced individually according to customer requirements. With the aid of safety rails that can be moved using lifting devices, the working area on the vehicle can be fully marked out and secured both lengthways and widthways.

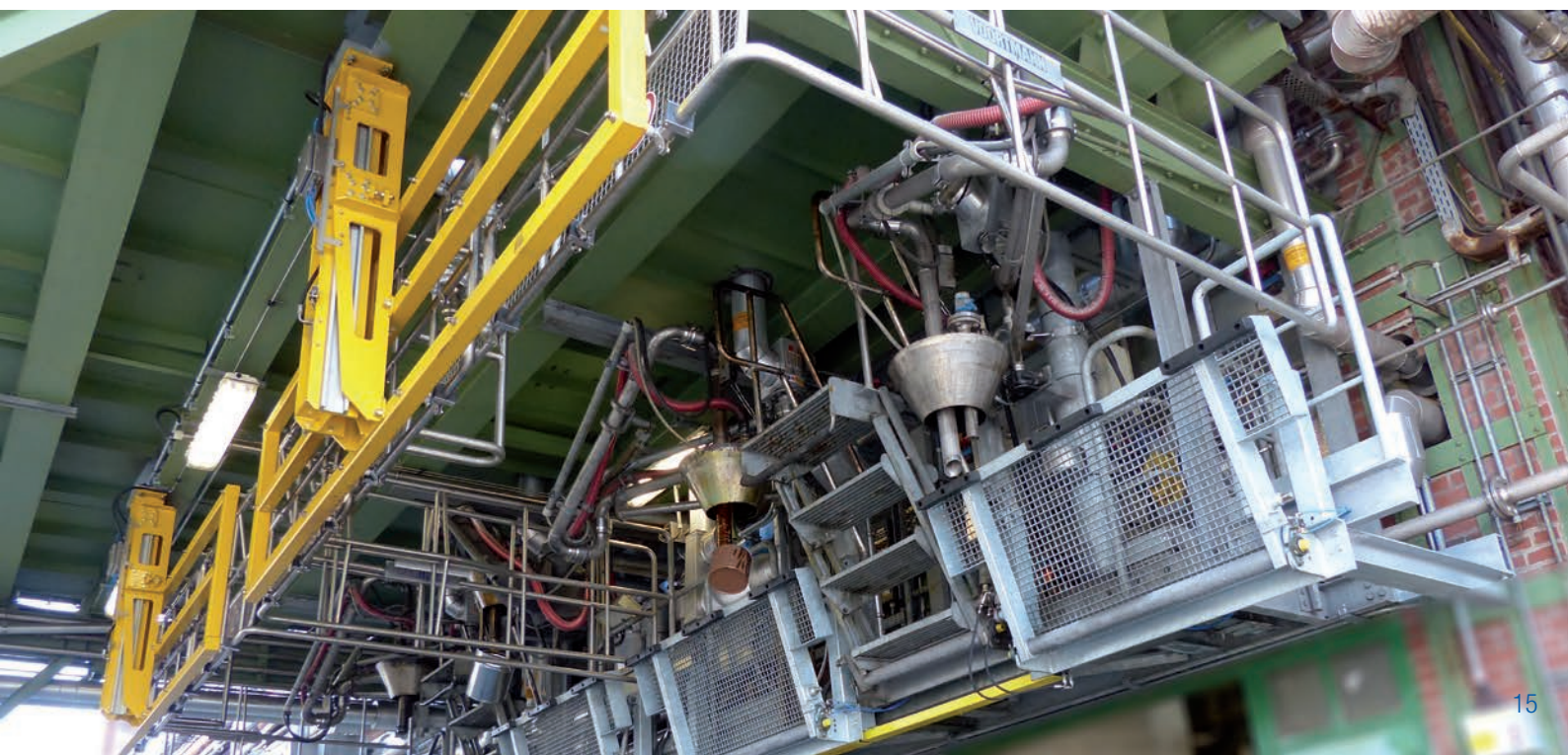
Due to the central operation facility, the operating person can adjust the workplace simply to the height, length and position of the tanker or tank wagon. VOORTMANN fall protection devices are available in various designs and materials.



Multifunctional fall protection device



Safety cages with lockable safety folding door



Loading Platforms

Individual loading platforms

Our services in the steelwork field range from slight changes to existing steel structure through to complete loading platforms.

The standard VOORTMANN loading platform offers simple and safe access to the top side of tankers and rail tank wagons. The loading platform is assembled on an upright column and supplied with an access staircase. A folding staircase and two loading arms can be fitted on both sides of the loading platform.



Easy and Safe Access

Loading Platforms



Swivel joints

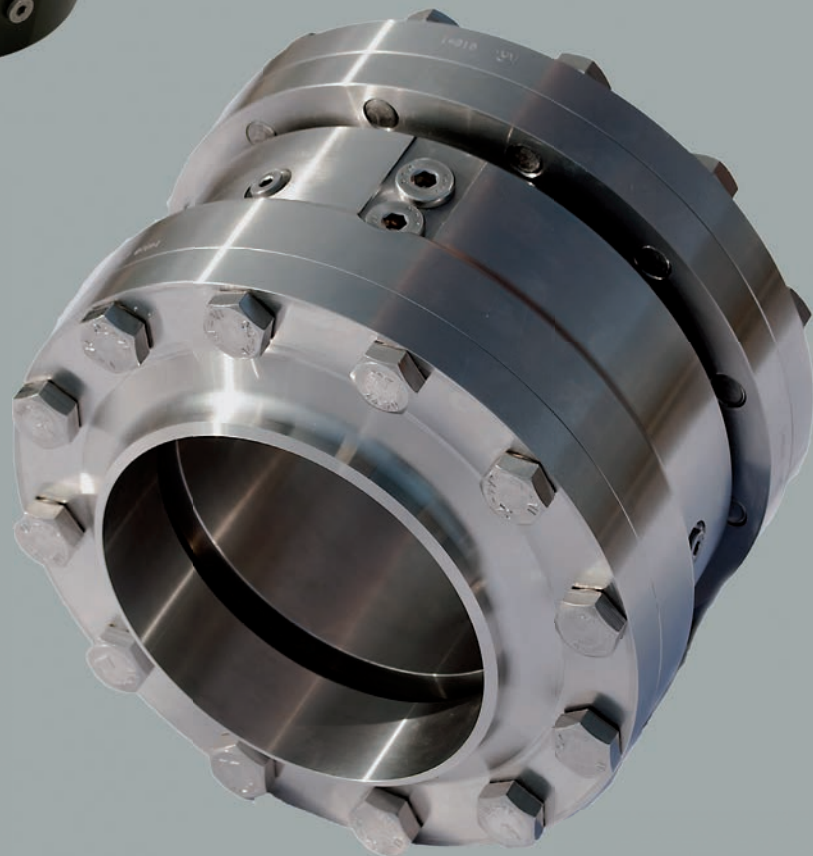
The range of applications for swivel joints is very wide. VOORTMAN swivel joints can be used both in loading arms and in pipe cutters or hose lines.

Swivel joints are used for the flexible connection of fixed pipe constructions that are used to handle liquids and gases. The TA Luft-approved sealing system in the swivel joints guarantees a perfect seal under all operating conditions (high pressure, high temperature).

The sandwich construction of the swivel joints allows the product seals and the bearing module to be easily replaced.

Apart from single swivel joints, VOORTMANN also supplies combination swivel joints that consist of one or more swivel joints with elbows and flanges. The use of high quality materials makes the swivel joints suitable for nearly all types of liquids and gives them a long lifespan.

The swivel joints are available in various designs and materials.



Dry couplings

Dry couplings enable hose or pipe lines that are filled or under pressure to be quickly and safely coupled or uncoupled in an environmentally friendly way without losing the material being transported. The coupling can be applied on suction and pressure pipes.



Emergency release couplings

Emergency uncoupling systems are suitable for use with liquid, gas or solid media. They protect the operator, the installation and the environment against damage at the installation and from product escaping in case of an emergency uncoupling. The accidental removal of a tanker or tank wagon and the drifting of a tanker ship leads to a quick, safe, controlled and non-destructive emergency uncoupling of the connection between the vehicle and installation.



Our strong partner:

ARTA 
more than stainless steel



The all-round carefree service for your loading facilities

A full team of service technicians and engineers advises you when it comes to maintaining and optimising your loading facilities - for increased reliability and for the safety of your operating personnel, taking account of the latest environmental protection technology.

The complete planning of the construction site (also when installing new facilities) at your premises and the coordination of the necessary outside contractors is planned by us, thus giving you an A to Z service. The repair/ optimisation work can be carried out on site at your premises or at our factory in Issum. In the latter case, we also take care of assembling/dismantling the loading components and the transport. In certain cases, either for cost reasons or with regard to the availability of loading arms, a general overhaul can represent a more cost-effective alternative to buying new loading equipment. At our workshop in Issum, the equipment is completely dismantled, inspected and tested. Worn or defect parts are replaced. A new surface coating is possible where necessary.

Our specialised service engineers can be flexibly planned **24 hours a day, 7 days a week** and are also on hand for you in emergencies - around the clock - 365 days a year. The service vehicles and their equipment provide you with all the technical state of the art benefits.

We carry out repairs, optimisations, overhauls and maintenance work not only for our own facilities but also for facilities made by **other manufacturers**, meaning that you only need one service partner.

Our service	Your benefit
Repair / maintenance / optimisation of your loading devices <i>produced by all manufacturers</i>	everything from one source (planning, execution, commissioning)
Our service professionals: · qualified persons pressure appliances, hydraulic hose lines, lifting platforms, loading bridges, SCC certification of persons · specialised hydraulic, pneumatic engineers, electricians, welders, fitters, tube benders	no costs for the qualification measures of your employees
Checking your equipment from safety points of view in accordance with BetrSichV §10 (industrial health and safety ordinance)	tested safety on your loading facilities
Hydraulic hose test according to BGR 237 (trade association regulation) HOT®hydraulic hose line management system	legal security, reduction of downtimes through early detection
Fully equipped service vehicles	no time lost due to direct fabrication on your facility
24-hour emergency service	quick help around the clock

Our service professionals



Deutschlands
Kundenchampions
2013 
www.deutschlands-kundenchampions.de

Deutschlands
Kundenchampions
2014 
www.deutschlands-kundenchampions.de

Spare parts

Besides our repair service, of course we also offer you spare parts for our loading facilities, but also other makes of components.

- Pneumatic and hydraulic components like cylinders, valves, hoses etc.
- Seals: various types and nominal widths, with corresponding approvals
- Gas springs and accessories
- Swivel joints
- Emergency uncoupling systems
- Dry couplings
- Hoses for chemicals and petrochemicals
- Various components of other makes





The VOORTMANN maintenance system

Extend the service life of your loading facilities and increase their reliability by means of regular maintenance checks.

We have been taking this task on at VOORTMANN and meeting the customers' requirements for over 25 years.

Using this experience, we have developed our loading equipment maintenance concept for you.

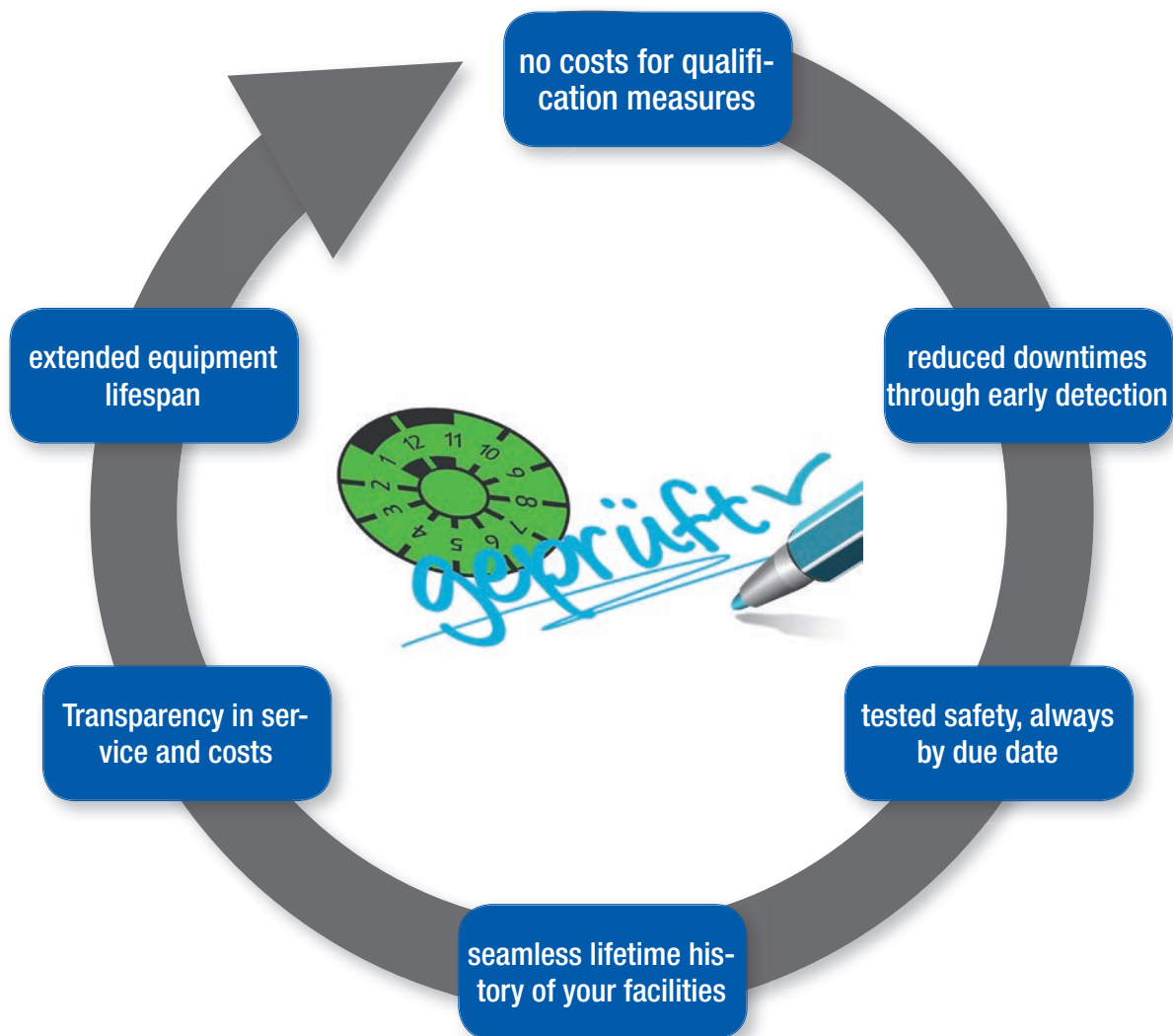
Consistent documentation about the condition of every single component gives you the opportunity at any time to identify technical changes in the facility and to react accordingly. Our aim is to keep your loading facilities available for you 100%.

Naturally we also offer the maintenance service for facilities made by **other manufacturers**, meaning that you only need one service partner for all parts of your equipment.

Our service	Your benefit
Specialised service engineers with qualifications for pressure vessels, pipelines, hydraulic hose lines, electricians, welders	no costs for the qualification measures of your employees (everything from one source)
Functional check on the individual parts of your loading facilities	reduction of downtimes through early detection of damage
Fluid service with modern measuring technology (oil analysis)	no purchase costs for analysis and filter equipment
Checking from safety points of view in accordance with BetrSichV §10	tested safety on your loading facilities
Automatic monitoring of components subject to mandatory tests on your loading facility (test protocol, test sticker)	Compliance with testing intervals
Consistent documentation in case of long-term system maintenance by us	lifetime data sheet for your equipment parts and their history
Cost-free damage analysis for you as part of the maintenance service, preparation of repair quotations	quick overview of the necessary maintenance costs
Servicing of your equipment at a set price	calculable service costs for you
Preparation of a service contract on request	long-term better planning for you, due to calculable service costs over the coming years



Maintenance System



Scope of servicing on site

- First time and one time only recording of all your loading installations
- Visual inspection of all components (steelwork, pipelines, swivel joints, leaks, etc.)
- Checking the leak monitoring holes and the swivel joints for leaks
- Checking the swivel joints for product inlet using the check on the state of the grease level
- Lubrication work on spring cases and bearing units
- Check on all screw connections
- Change of hydraulic oil and filter on the hydraulic equipment, if necessary including flushing the lines
- Filling out the maintenance checklists

Final documentation

- Creating maintenance reports and lifetime data sheets
- Sending the maintenance documentation



Pneumatics control engineering

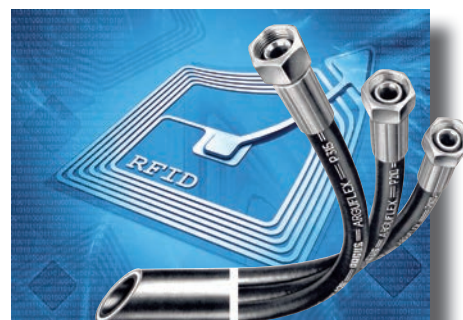
We satisfy your requirements 100 %

- from engineering to commissioning
- with products from the market leaders Norgren, Festo, SMC, Parker
- including e-technology
- individual, serial and special control systems
- Directives: 2006/42/EG, GOST, CSA, UL, ATEX

Testing according to BetrSichV

Our service - your safety

- Hydraulic hose lines (HOT[®] management system)
- Pressure vessels (DMS[®] management system)
- Hydraulic equipment
- Lifting platforms
- Loading bridges and movable ramps



Ask for our current brochure, "Fluid partner with system" on tel.: +49 2835 9233-111 or online at www.voortmann.de.



Hydraulic equipment construction

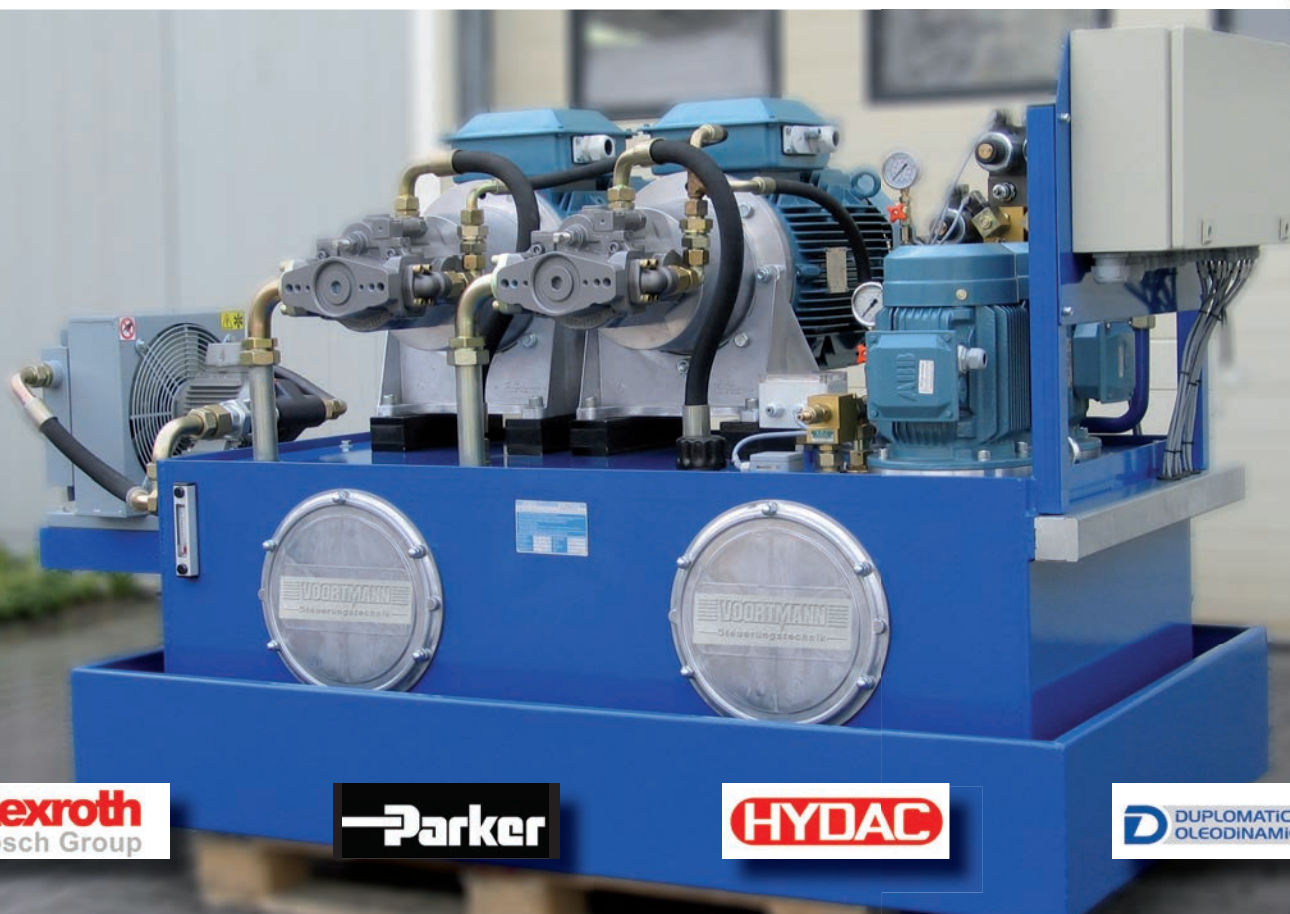
Individually tailored for you

- from engineering to commissioning
- equipped with products from the market leaders
- reliable, maintenance-friendly and energy saving
- Ratings up to 45 KW / 250 litre/min / 500 bar
- Directives: 2006/42/EG, GOST, CSA, UL, ATEX

Flexible service

100 % service - for flexible use

- Maintenance system (inspection/maintenance/maintenance plus)
- Fluid service & nitrogen service
- Component repair from A - Z with pick-up service
- Hire equipment (functional, filter & drainage equipment)
- Leakage detection in the compressed air system



Compressed air technology - Commercial compressed air supply with system

Besides electricity, compressed air is the most important source of energy in the industry and trade sector. Nevertheless, it is paid too little attention in the everyday business world.

The innovation of recent years brought a continuous improvement to the cost-effectiveness and environmental compatibility of compressed air units. We must make the most of this.

The days when the compressed air supply system and compressed air network used to be designed and installed by companies themselves are over - at least for those who have no money to give away. VOORTMANN offers you complete solutions here.

Compressed air generation

- Screw compressors
- Reciprocating compressors
- Boosters
- High pressure compressors
- Blower
- Vacuum pumps
- superordinate compressor control units



Compressed air preparation

- Refrigeration dryers
- Adsorption dryers
- Membrane dryers
- Filters



Compressed air accessories

- Containers
- Condensate drainage systems
- Condensate disposal systems

Service

- Pipework assembly work
- Maintenance work
- Leakage detection work
- Compressed air consumption analyses
- Cost-effectiveness calculations

Ask for our current brochure, "Compressed air technology" on tel.: +49 2835 9233-111 or online at www.voortmann.de.

Increase your productivity through technical training

The demand for targeted professional training is rising continuously. Companies have recognised the importance of internal training to achieve and extend their competitiveness. This training of employees supports the companies' targets because it creates motivated, creative, responsible and commercially thinking members of staff and ultimately increases your productivity. As a private provider of technical training and development, we think in a customer-oriented way and are therefore able to meet our customers' needs and actually put them into practice. Our success proves us right, with over 1,000 seminar participants a year with top assessments being our reference.

Hydraulics

BGI 5100 Safety with hydraulic maintenance
HY-B Basic hydraulics knowledge
HY-1 Hydraulics basic principles
HY-2 Hydraulics advanced level
HY-3 Electro-hydraulics
HY-4 Proportional hydraulics
HY-E Hydraulics for newcomers
HY-E Hydraulics for advanced learners
HY-PRAX Hydraulics, practice
HY-IN Hydraulics for maintenance engineers
HY-BPS Qualified person in hydraulic hose lines
HY-BPS 2 Qualified person refresher course HY hose lines

Pneumatics

PN-1 Pneumatics basic principles
PN-2 Pneumatics advanced level
PN-3 Electro-pneumatics (specially suited for mechanical engineers)
PN-5 Pneumatics control technology
PN-P Pneumatics for practitioners
PN-C Pneumatics compact

Pressure appliances

BP-DR1 Qualified person "Pressure equipment"
BP-DR2 Qualified person "Pressure equipment" refresher course

Electrical engineering / PLC / ATEX

UME handling electricity (for non-electricians)
LOGO-M1 LOGO for mechanical engineers
SPS-GK7 SPS Basic principles seminar S7 SIMATIC STEP 7
SPS-AK7 SPS Advanced seminar S7 SIMATIC STEP 7
SPS-MK7 Assembly, commissioning & troubleshooting SIMATIC STEP 7
SPS-DP7 Profibus DP, with troubleshooting SIMATIC STEP 7
SPS-T SPS engineer according to VDMA/ZVEI directive
WINCC WinCC-FLEX-1 for SIMATIC panels
SPS S5 Basic principles seminar
ATEX - Explosion protection basic principles
Logo-E1 Logo - Control technology for electrical personnel
SPS-GKIBH5 S5 Basic course with IBH S5 for Windows©
SPS-GKIBH7 S7 Basic course with IBH S7 for Windows©
SPS-GK1200 S7-1200 in the TIA portal© with HMI

Seminar brochure / prices / dates

You can get current prices and deadlines on request, in the seminar brochure or on our website www.voortmann.de.

We are also happy to send you a seminar brochure in the post. Give us a call on tel.: +49 2831 9777410





Spray technology

For some years we have been developing and producing customised spraying and lubricating equipment also for the forging and rolling mill industry.

Benefit from our proven and reliable technology especially in the following areas, which has a leading position on the world market in the meantime:

- seamless tube manufacture in rolling and forging mills
- lubrication of forging dies in the forging industry
- special solutions

Naturally we also optimise the processes on equipment that does not come from VOORTMANN.

Preventive servicing, maintenance with a **24-hour emergency service** plus a short-notice supply of spare parts worldwide and individual training courses round off our range of services for you in the spray technology field.

Solutions for seamless tube manufacture

It is no longer possible to imagine modern life without steel tubes, which are used in the most diverse areas. Both welded and seamless tubes are used.

When it comes to seamless tube manufacture, there are two basic processes, piercing block material and stretching perforated blocks into a tube, which are done in different ways. The piercing process is done either in a perforating press or in the cross rolling method.

Using the VOORTMANN spray technology processes, you will optimise not only the quality but also the downtimes of your tools.

- VOORTMANN piercer cooling
- VOORTMANN desoxidation units
- VOORTMANN mandrel bar lubrication and cooling



Spray technology for forging dies

Metal forming in the forging industry is done at relatively high temperatures. In order to prevent damage to the tool and workpiece, these have to be continuously lubricated after each forging process.

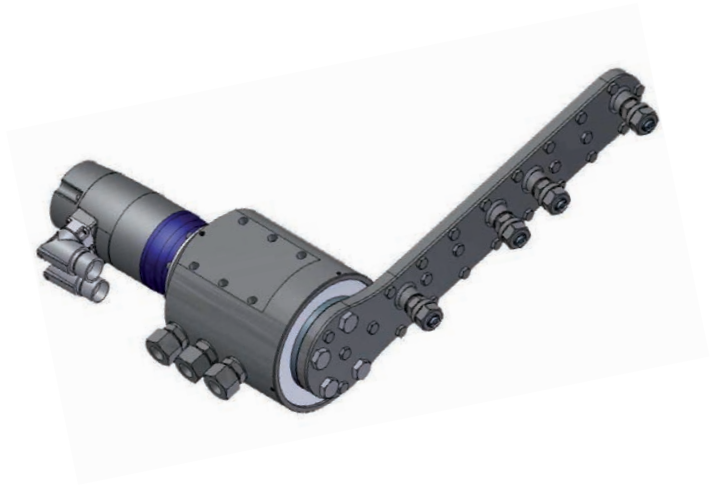
With the following technologies from VOORTMANN, you can significantly increase the lifetimes of your forging dies and hence ensure the quality of your products.

- Robot die spraying systems
- Stationary die spraying systems

Rotary spray head

The VOORTMANN rotary spray head saves you time-consuming tool changes.

Separately controllable spray nozzles enable them to be used on forging dies with different diameters with one tool.



Special spray technology solutions

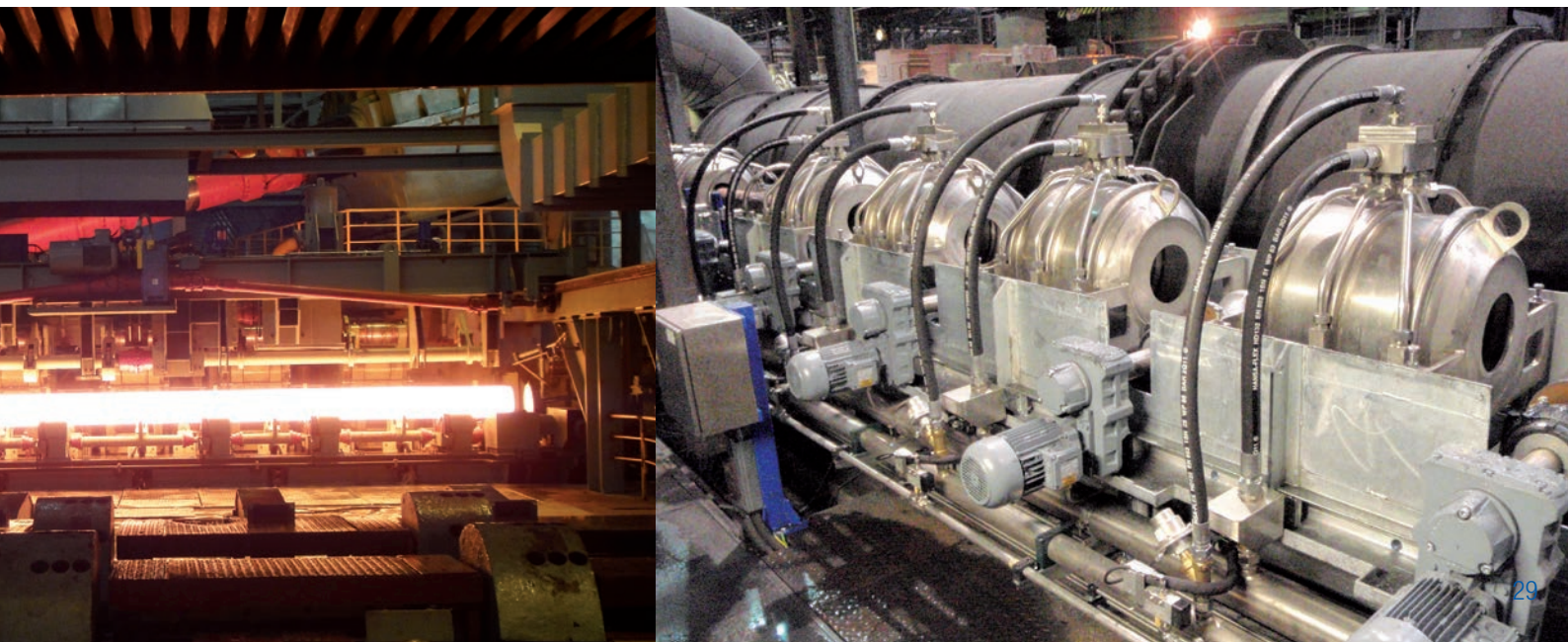
- Tube preservation
- Graphitic precoating and drawing oil coating
- Billet descaling

References from the spray technology sector

Benter Steel Tube GmbH **SMS Meer** SMS Innse **Vallourec** Salzgitter Mannesmann

TMK Europe GmbH Tenaris Tamsa **Rohrwerk Maxhütte** SSC Anlagenbau GmbH Baosteel

ISMT Ltd **Otto Fuchs Dülken GmbH & Co LTD** AAM GmbH **GS&G Supply**



We see our customers as partners

As an application-oriented partner, together with its customers, VOORTMANN turns ideas into successful products.

From the initial customer care service through to engineering, production, installation and commissioning, our customers only need one point of contact.

Quality policy

Our constant aim is to meet the new challenges in the market with quality and service. Working closely together with our customers comes first for us. Qualified members of staff in the office and in the field are competent partners for discussing the project management of technically and commercially tailored solutions and hence contribute to a sustainable increase in productivity.

An extensive and innovative range of technical components is the prerequisite for a quick and streamlined conception of an overall technical solution from a single source.

A particularly high value is placed on the willingness to give our customers the best possible service.

VOORTMANN belongs to Germany's customer champion® 2014

In February 2014, the German Society for Quality (DGQ) and forum! Marktforschung GmbH started a nationwide customer survey. Customers were selected at random and asked over the phone about the product range, quality, delivery capacity and staff friendliness. Once the data was evaluated, the result was clear: for the second time in a row already, VOORTMANN Steuerungstechnik is one of Germany's Kundenchampions® [customer champions] 2014.

The management and all the members of staff are delighted to be acknowledged by their customers. Freddy Voortmann: "We cannot rest on our laurels, however. We are doing everything possible to fulfil the expectations of our customers in future too, so that we will be among the customer champions again next year."

Precisely taking the needs and ideas of the customers into consideration and making the customers loyal over the long term is a major challenge for VOORTMANN as well. This award has shown that we are on the right path.



A Selection of our satisfied Customers

References from the Loading Technology Sector

We thank our partners for their confidence

At this point we would like to thank our customers and suppliers for the confidence they have shown us. The progress and development of our company is critically supported by your praise, suggestions and criticism.

We look forward to working with you successfully.

Your VOORTMANN team



"We stake everything on fulfilling the expectations
of our customers in future too."

Freddy Voortmann

BASF **AKZO** **NOBEL** **RÜTGERS** **BAYER**

BYK **CHEMIE** **LANXESS** **SALTIGO** **CARGILL**

CURRENTA **SASOL** **CABB** **OXEA**

EMERY **Oleochemicals** **VINNOLIT** **BP**

SOLVAY **CLARIANT** **COMPO** **Petrotank**

CELANESE **STYROLUTION** **TRANSTANK**

TANQUID **EVONIK** **INEOS** **MOMENTIVE**

Thanks also to the companies that were not listed!



VOORTMANN GmbH & Co. KG Steuerungstechnik

Company headquarters Issum

Lindenau 28 - 30

47661 Issum, Germany

Tel: +49 2835 9233-0

Fax: +49 2835 9233-333

Geldern training centre

Mühlenweg 12

47608 Geldern

Tel: +49 2831 977741-0

Fax: +49 2831 977741-33

email: info@voortmann.de

web: www.voortmann.de